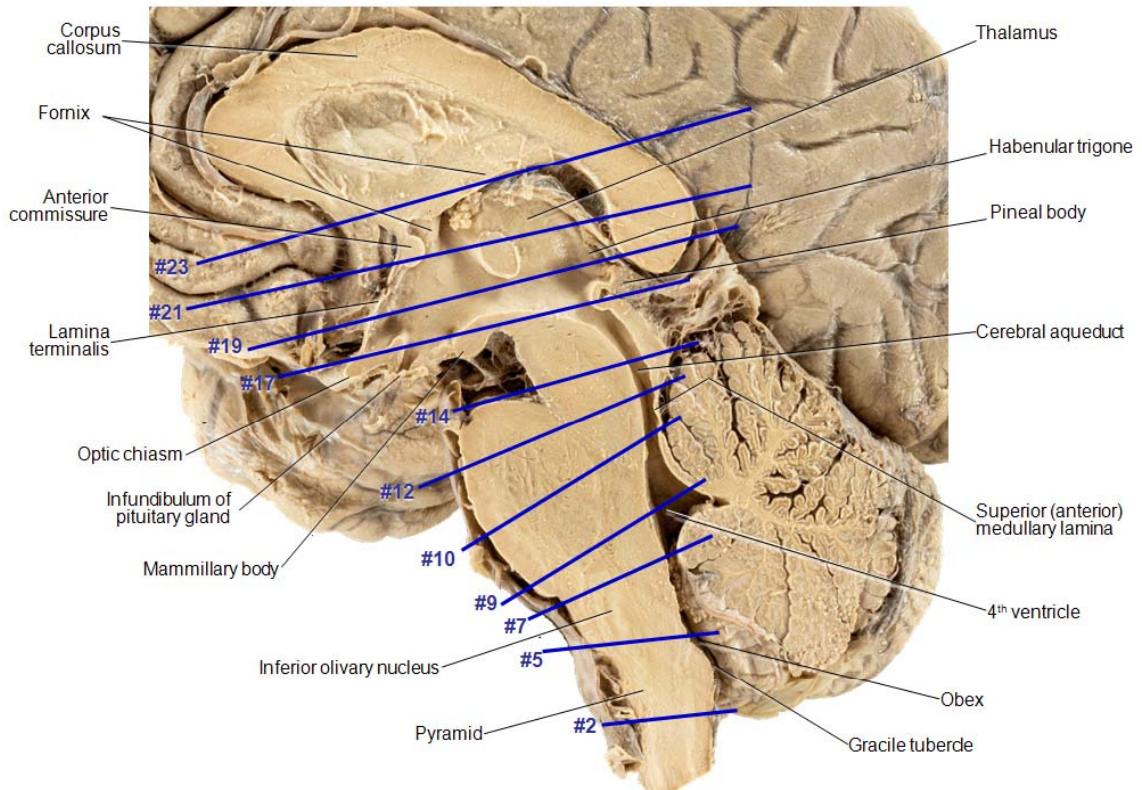
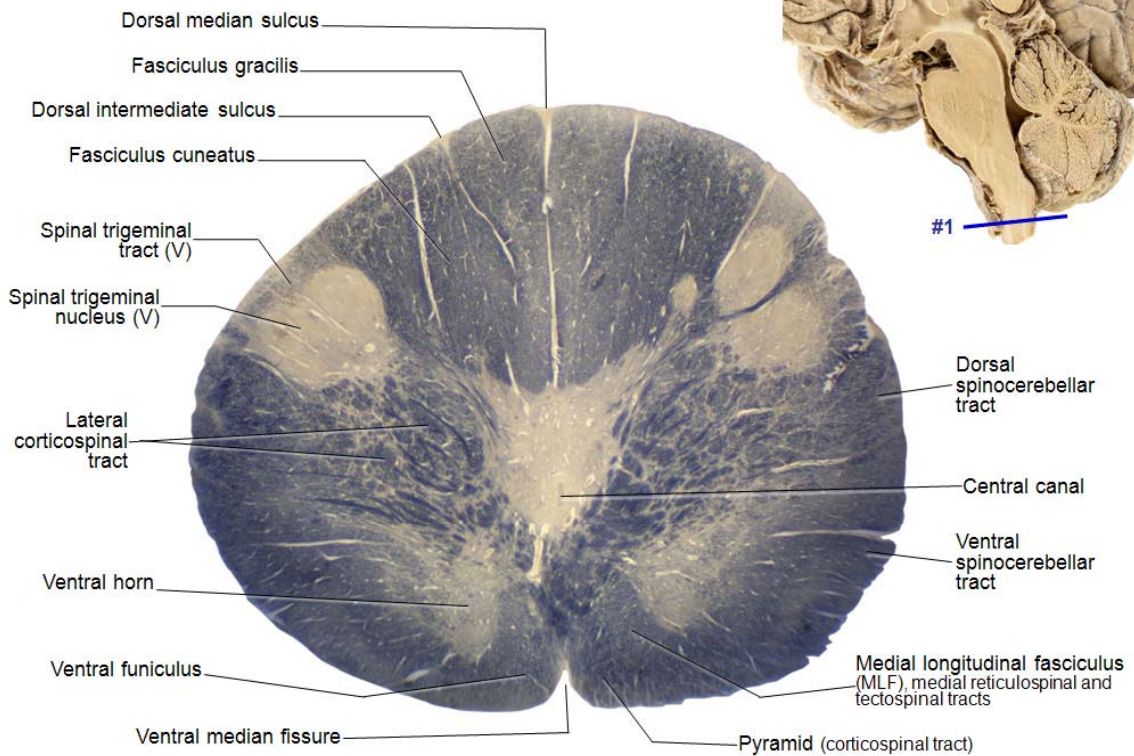


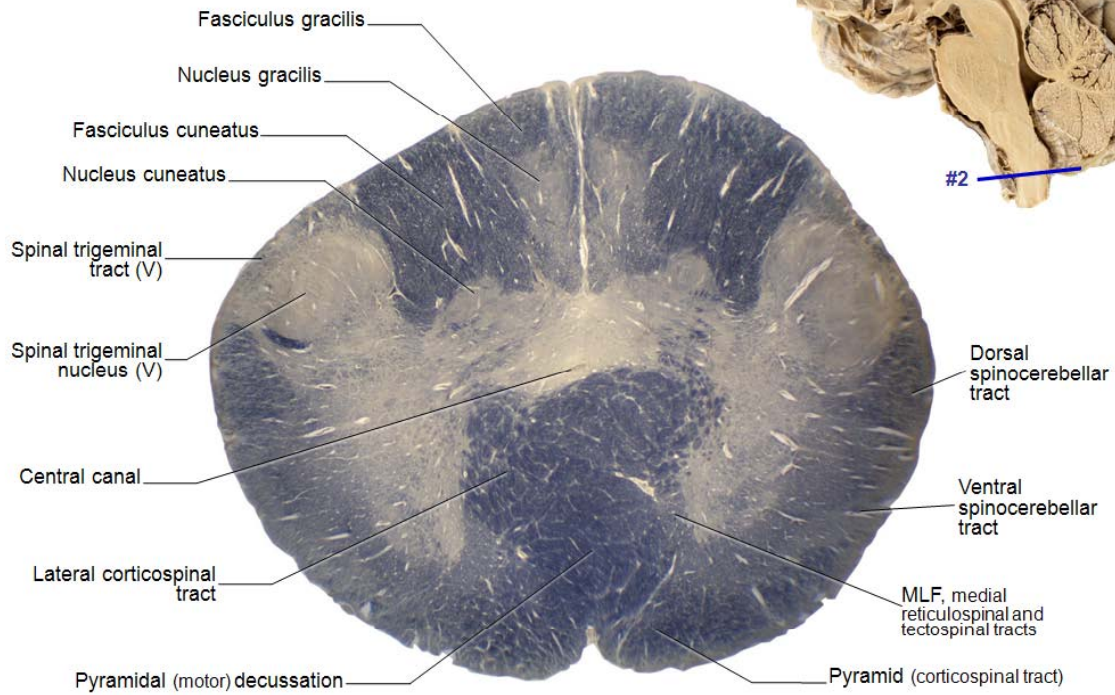
## Midsagittal Section of Brainstem and Diencephalon



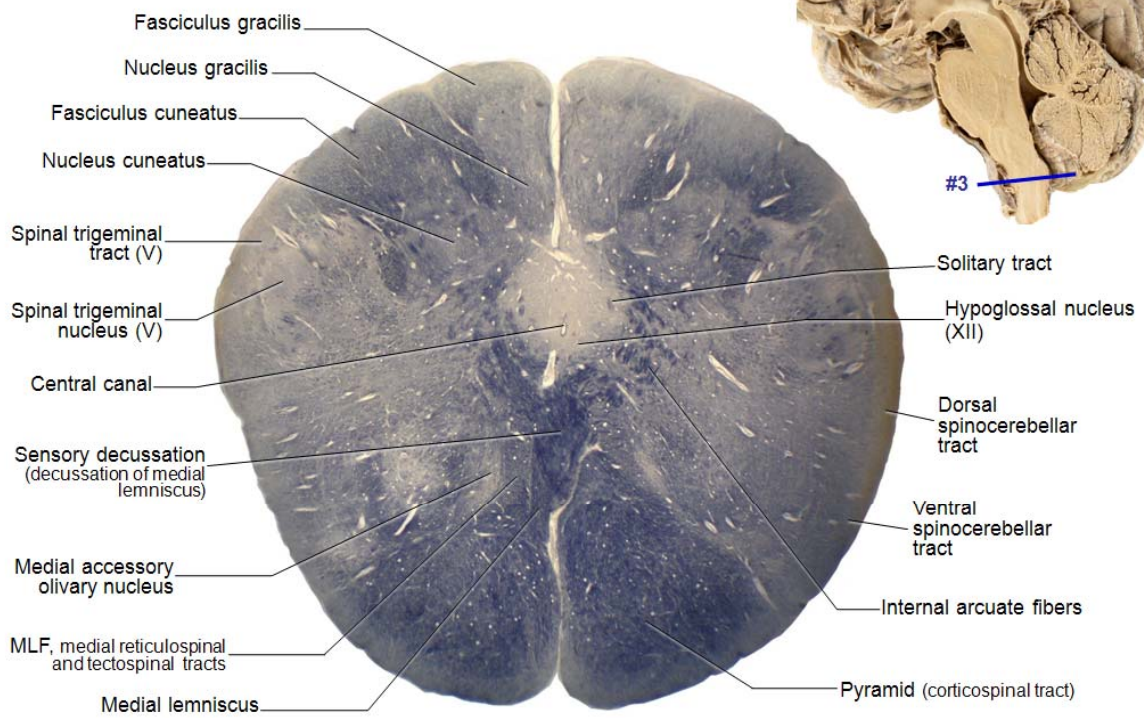
## Transition from Spinal Cord to Medulla Oblongata (Section #1)



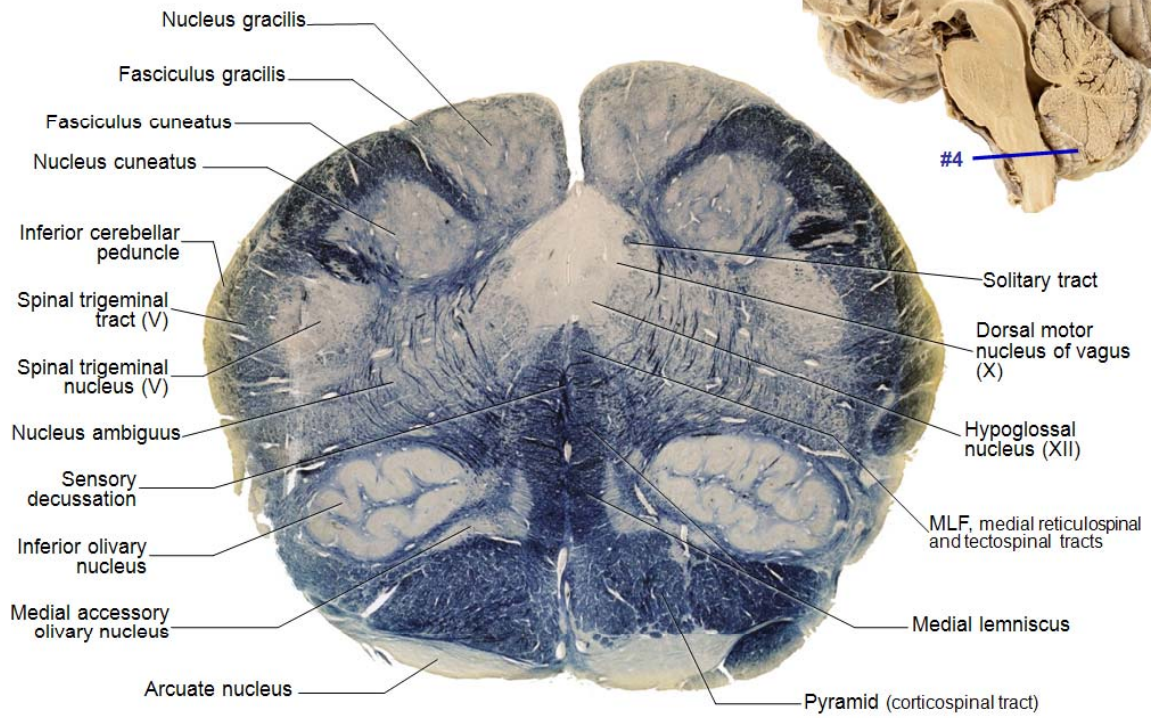
Level of Pyramidal Decussation (Section #2)



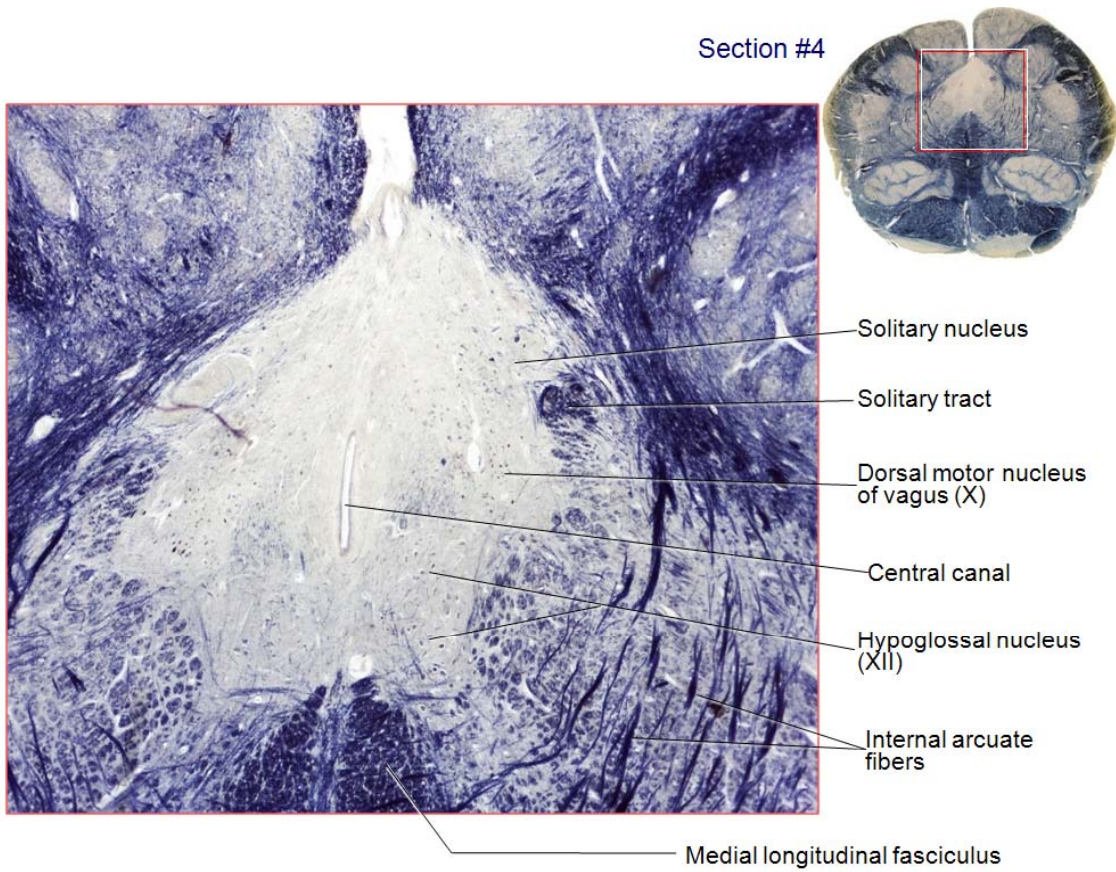
Medulla Oblongata – Level of Sensory Decussation (Section #3)



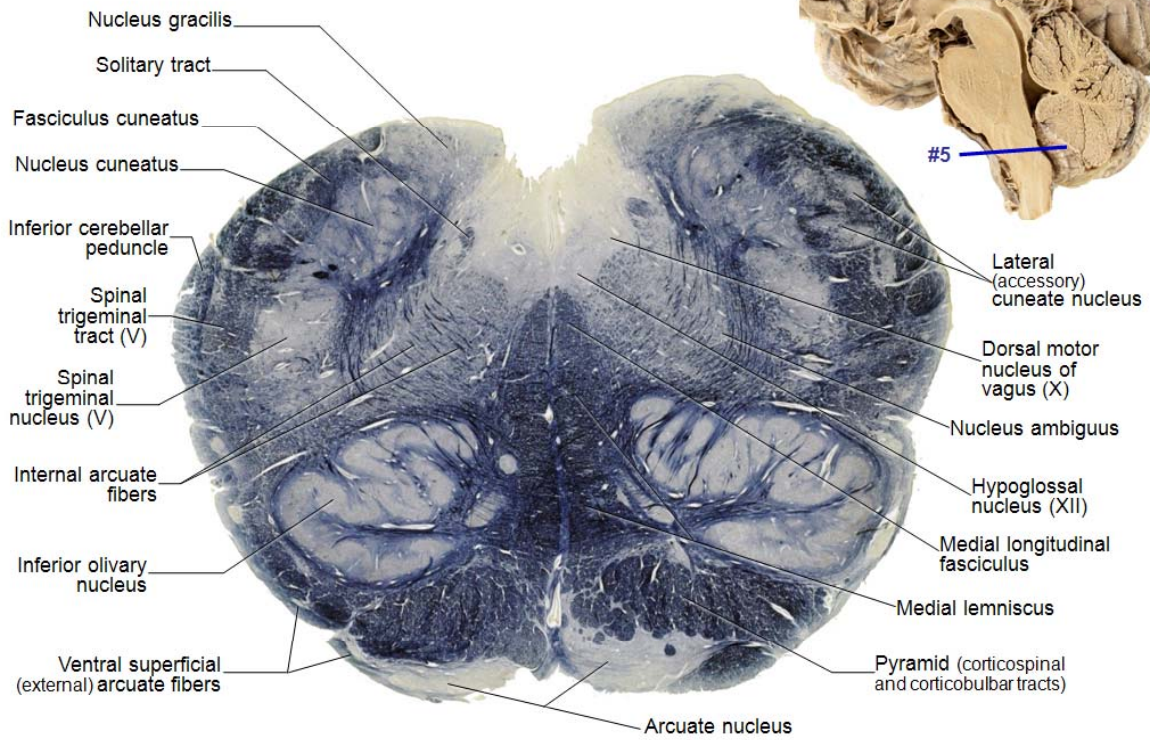
Level of Rostral Sensory Decussation (Section #4)



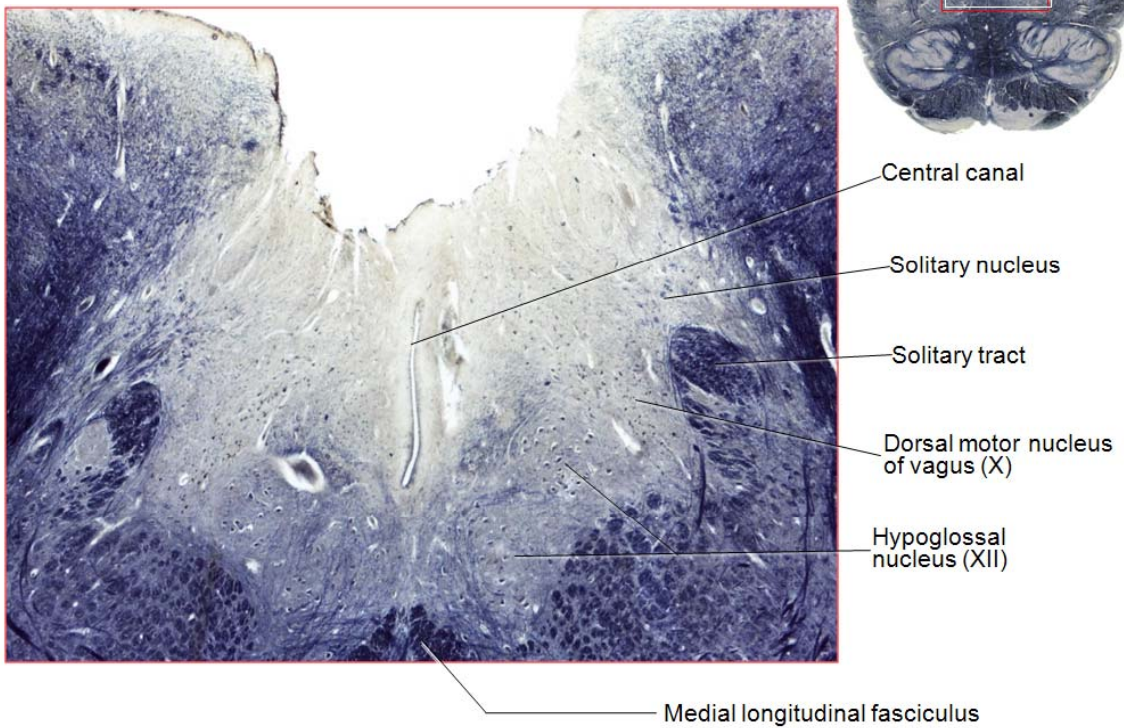
Section #4



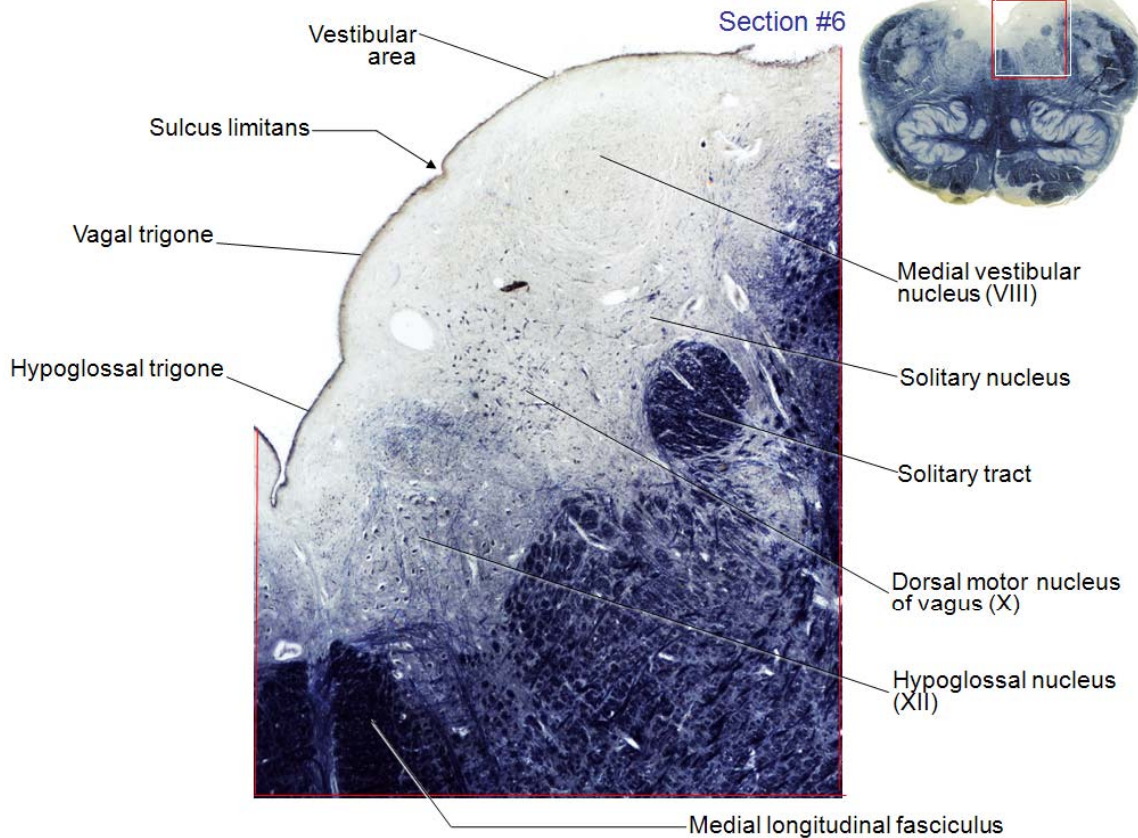
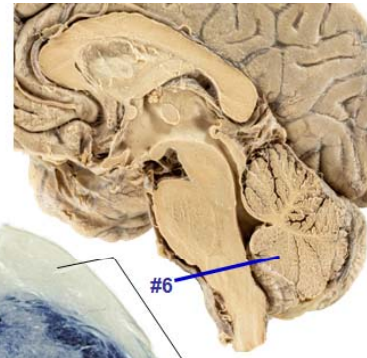
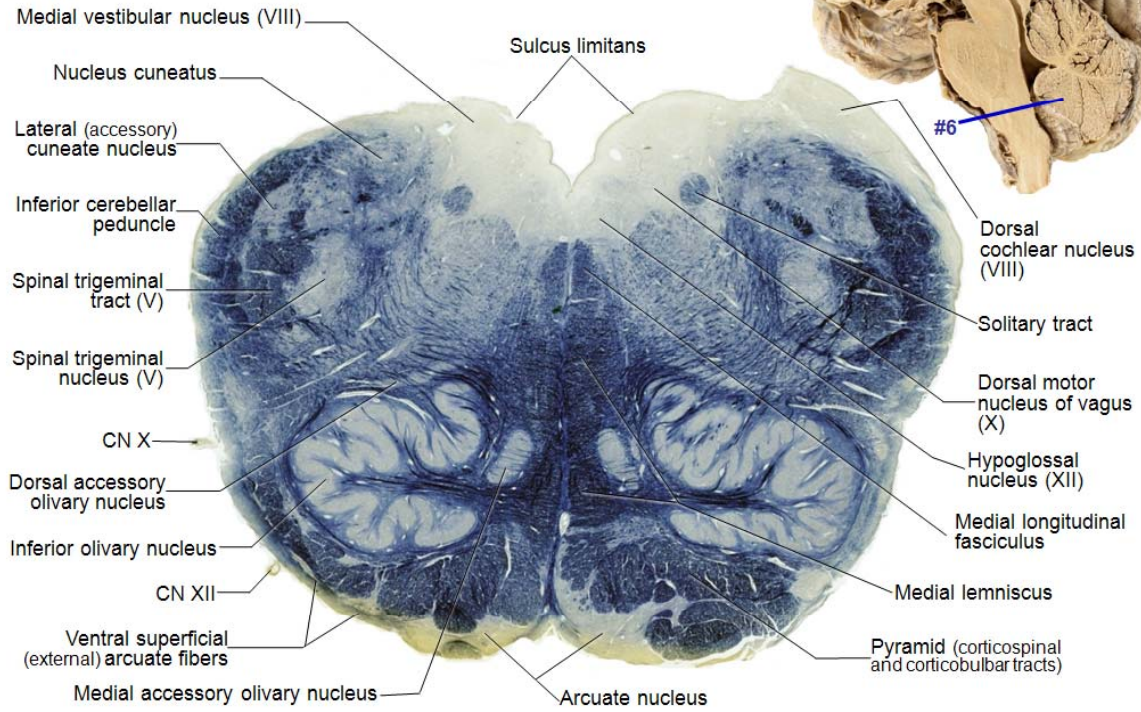
Medulla Oblongata – Level of Obex (Section #5)



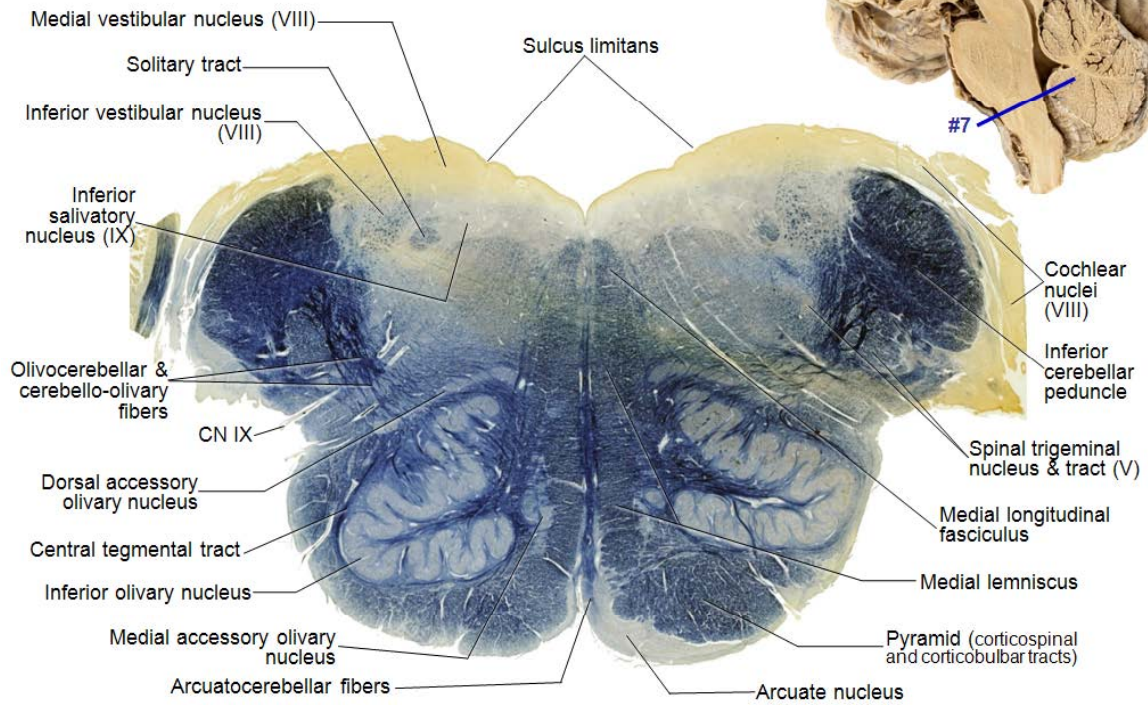
Section #5



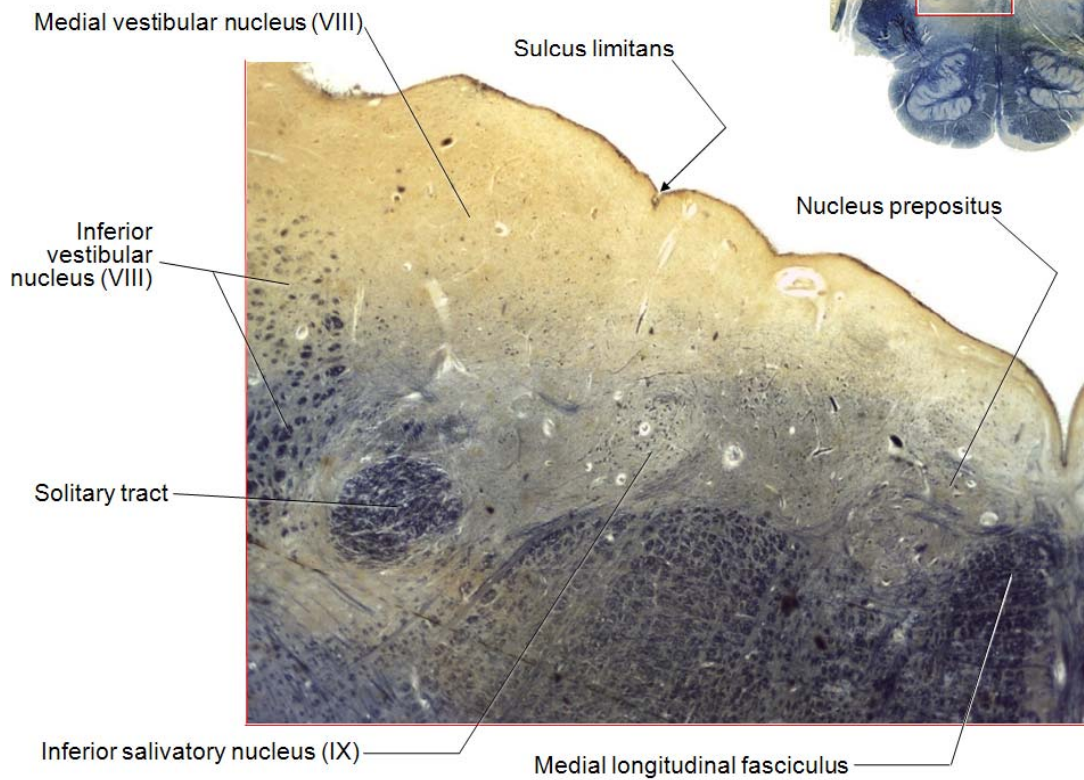
Level of Cranial Nerve Nuclei X and XII (Section #6)



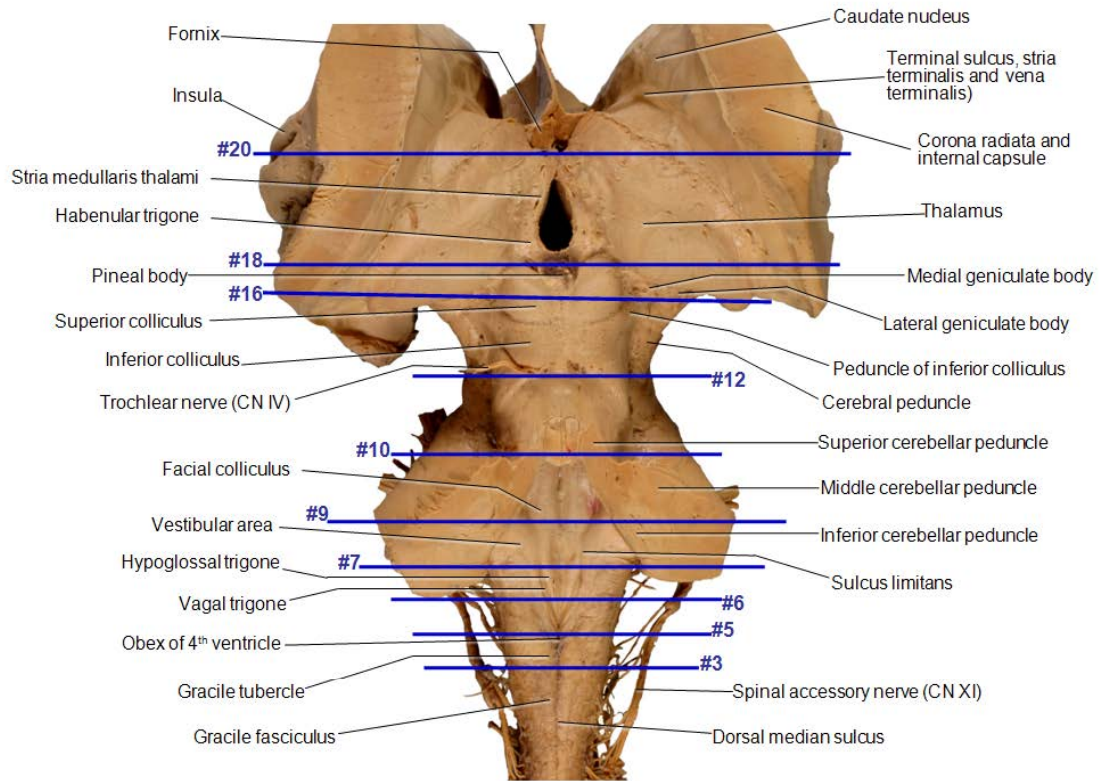
Level of Cranial Nerve Nuclei VIII and IX (Section #7)



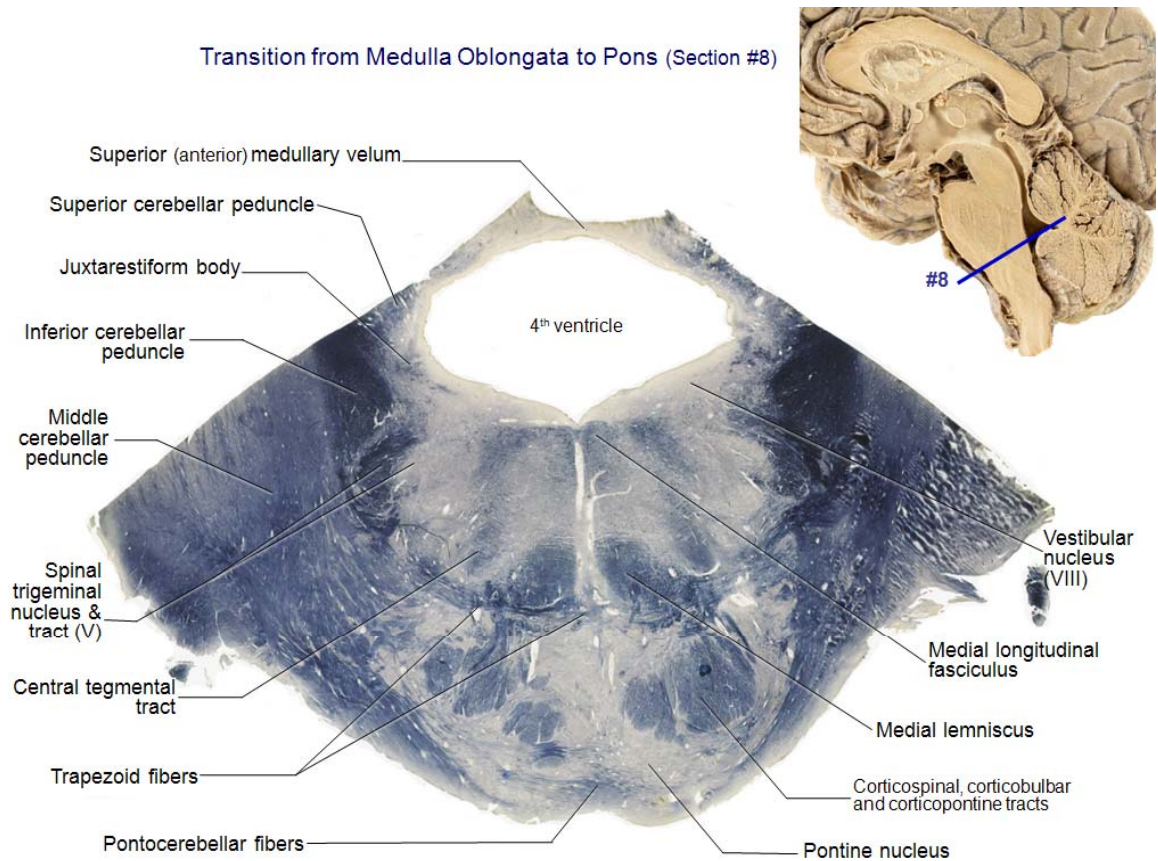
Section #7



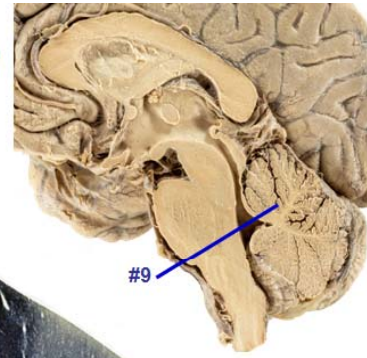
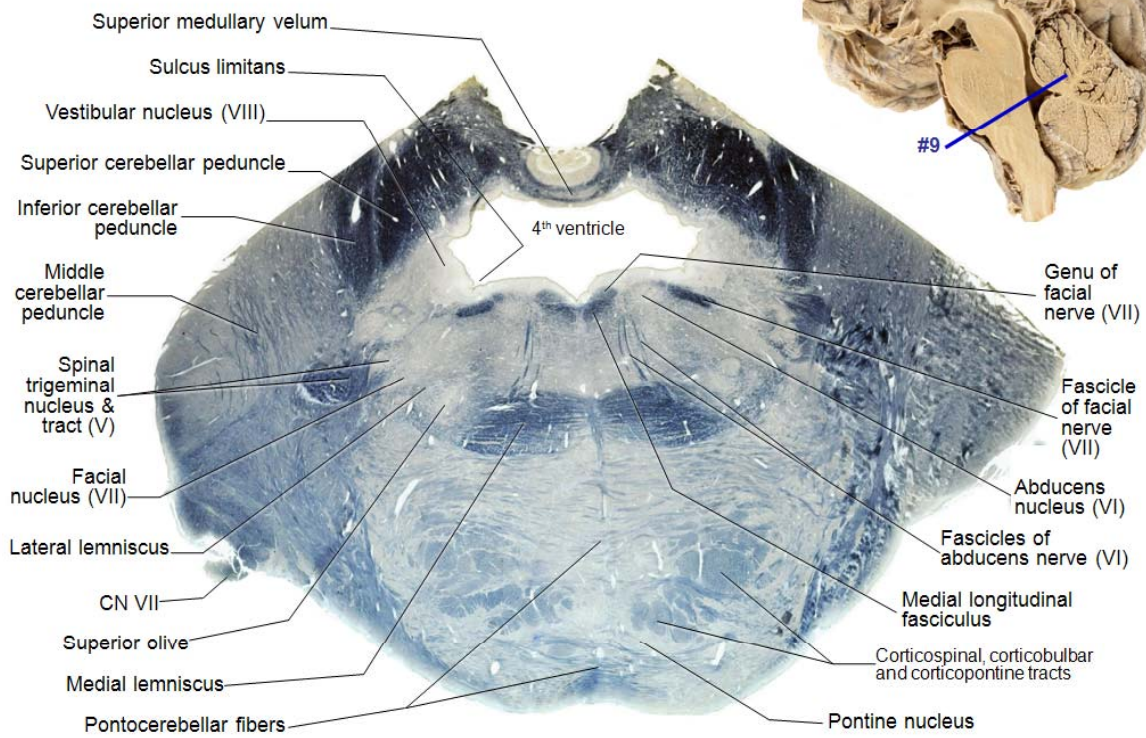
## Dorsal View of Brainstem and Diencephalon



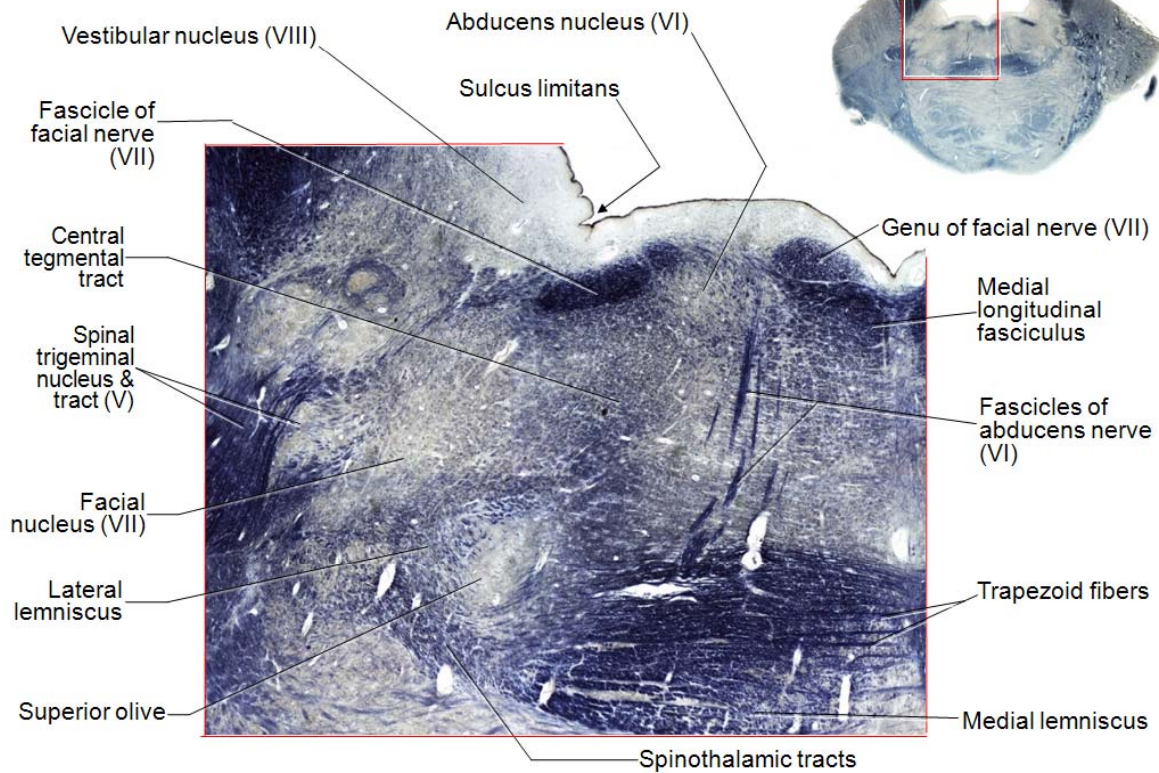
## Transition from Medulla Oblongata to Pons (Section #8)

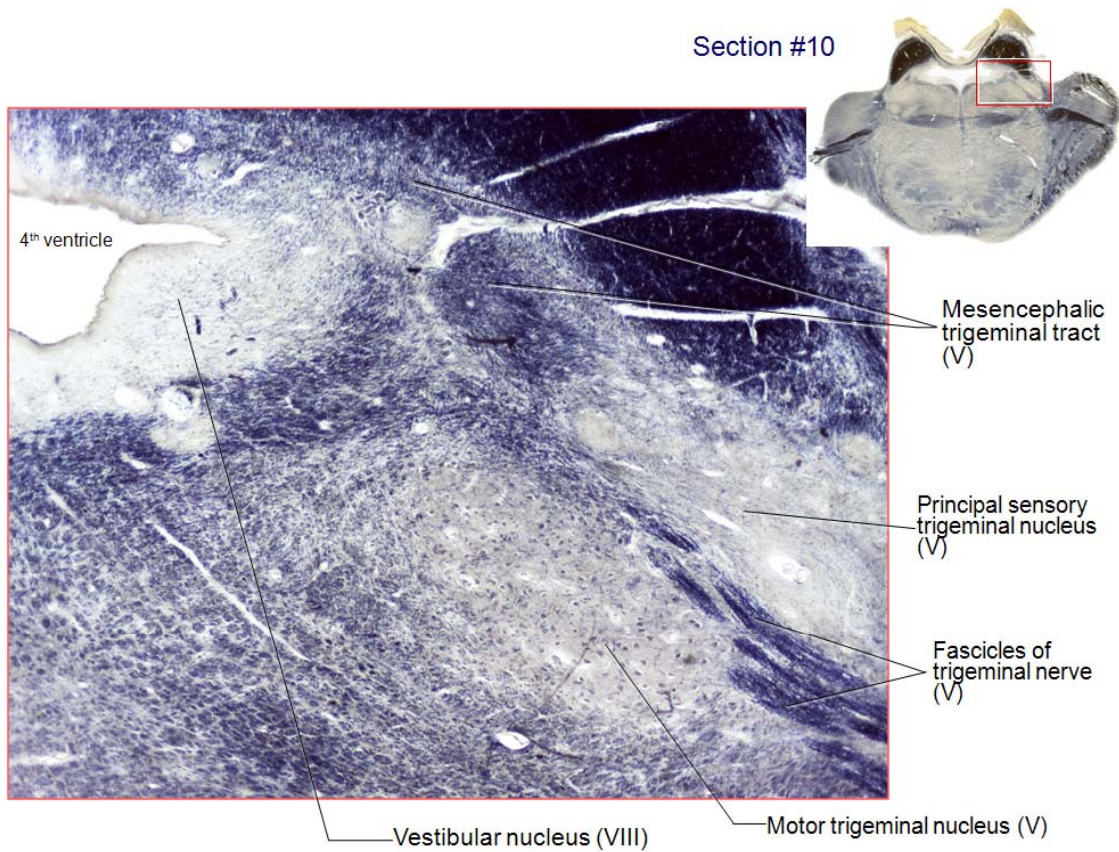
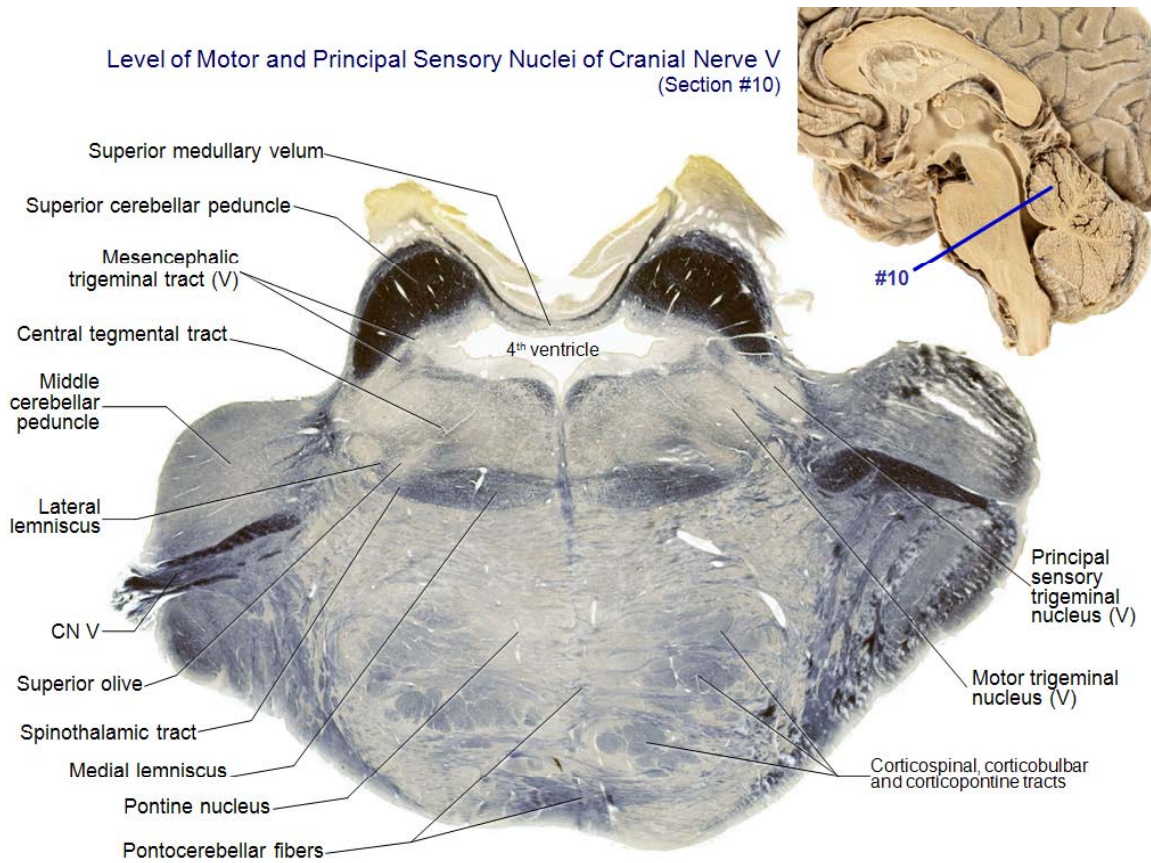


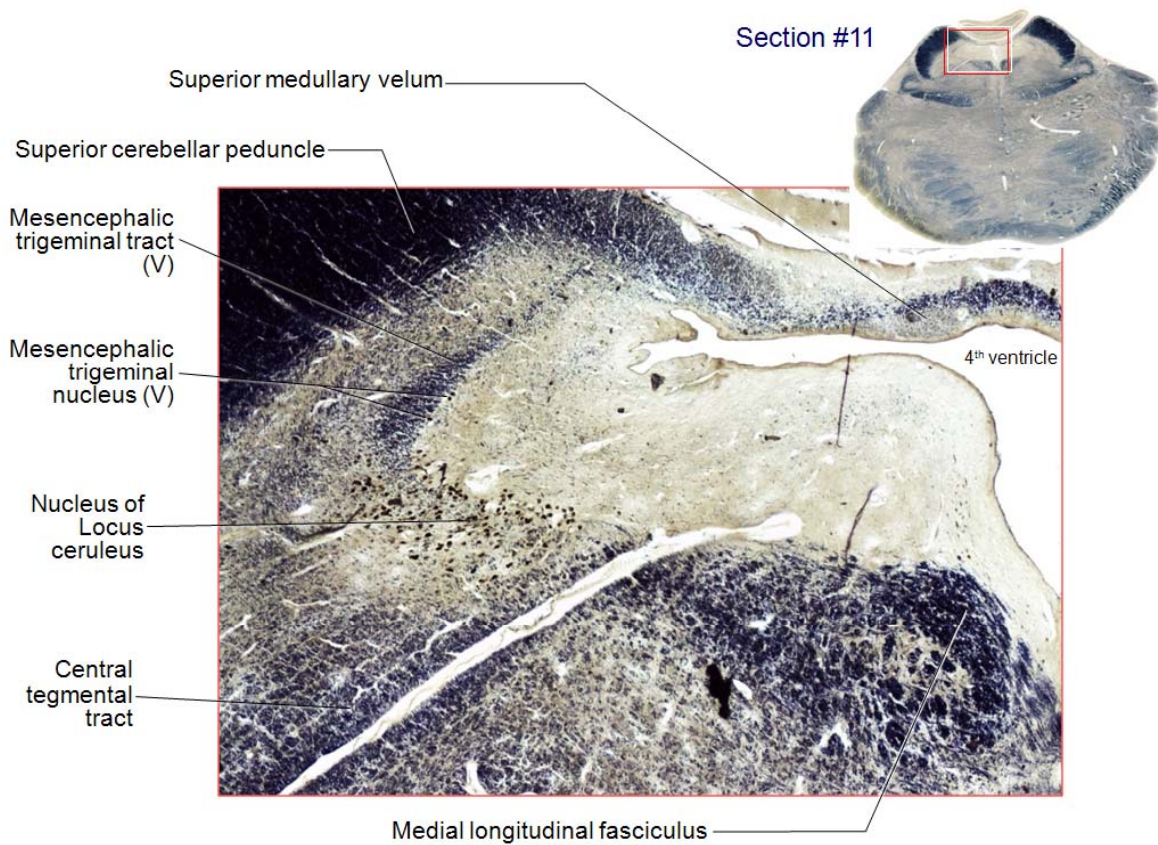
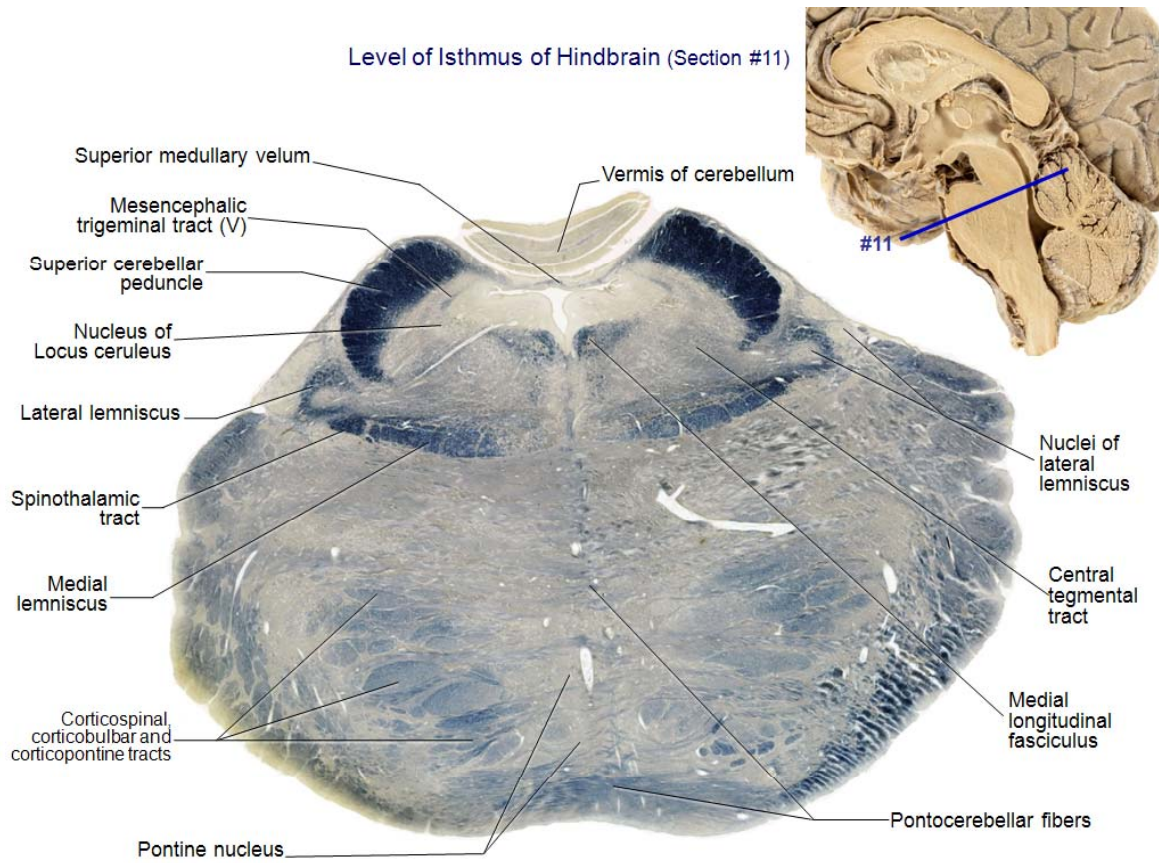
Pons – Level of Cranial Nerve Nuclei VI and VII (Section #9)



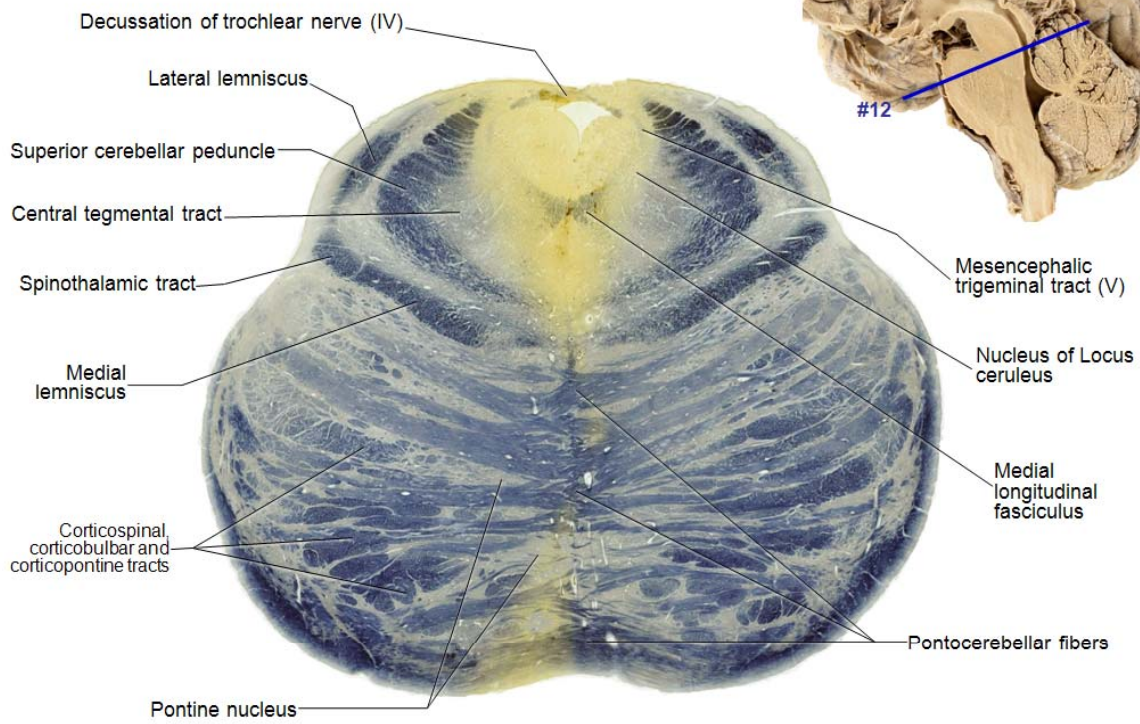
Section #9



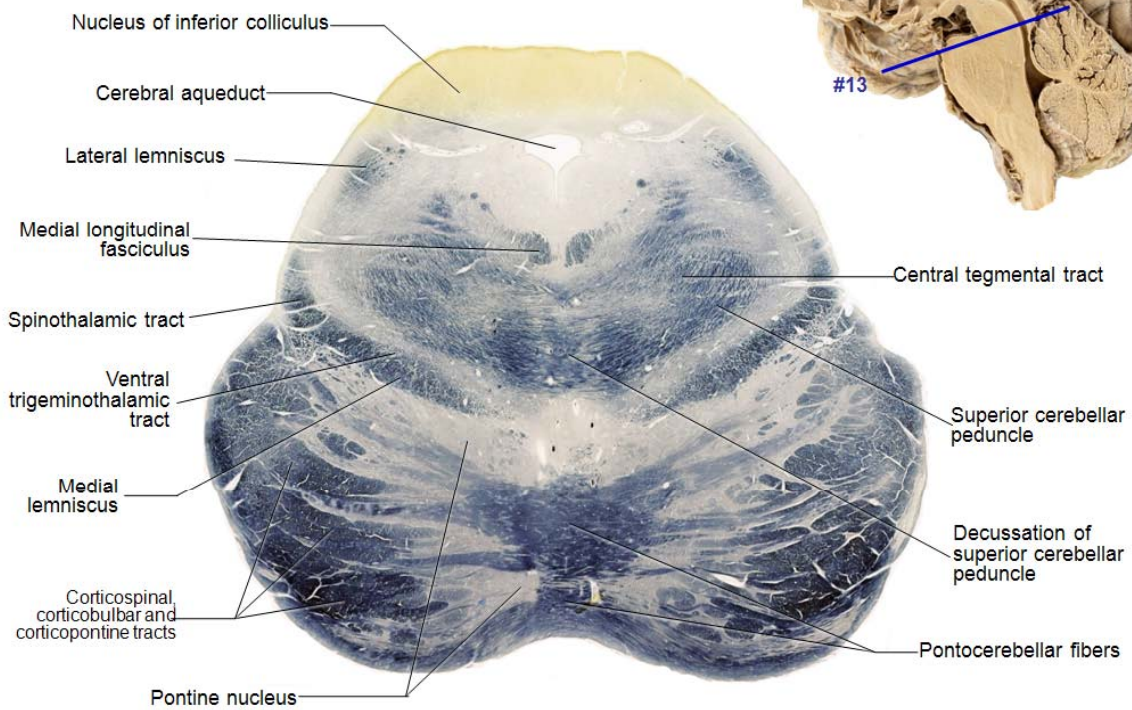




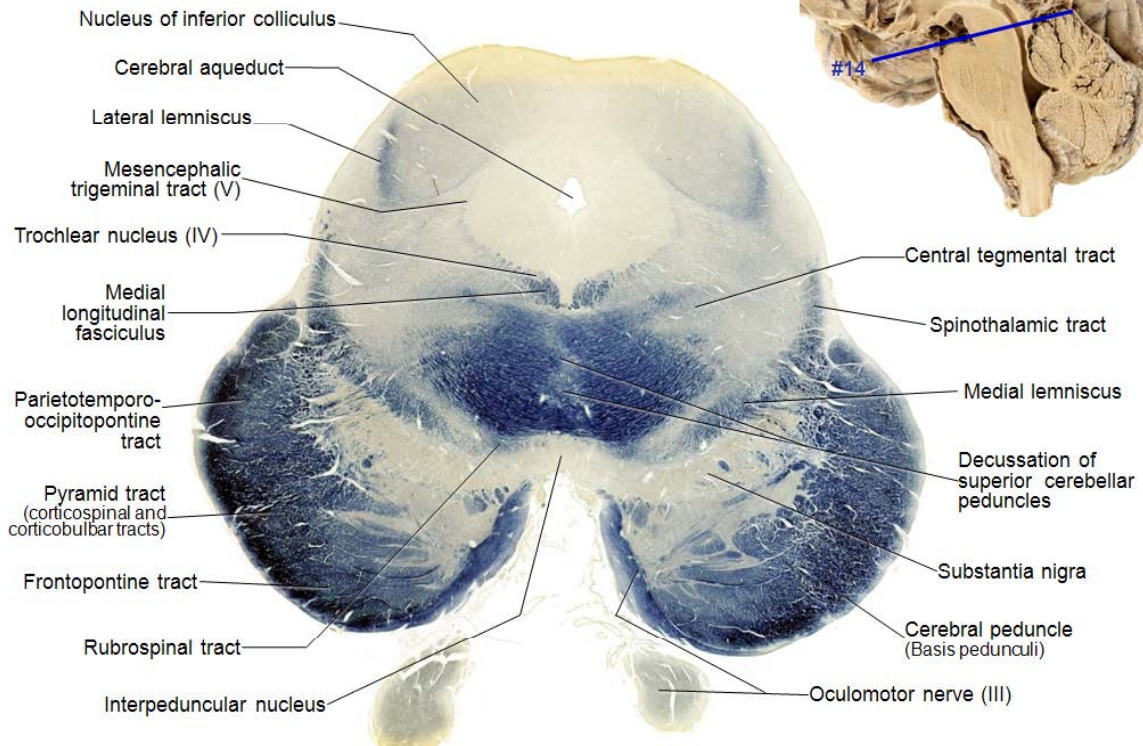
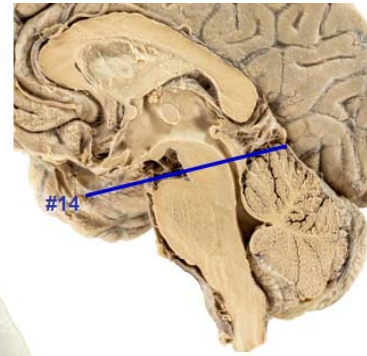
Decussation of Trochlear Nerve (Section #12)



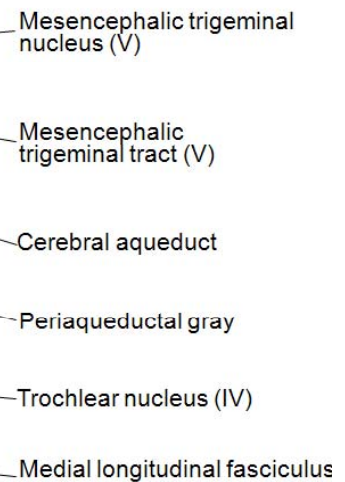
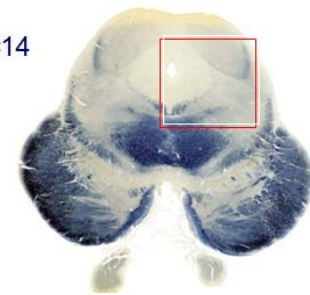
Midbrain – Level of Caudal Inferior Colliculus (Section #13)



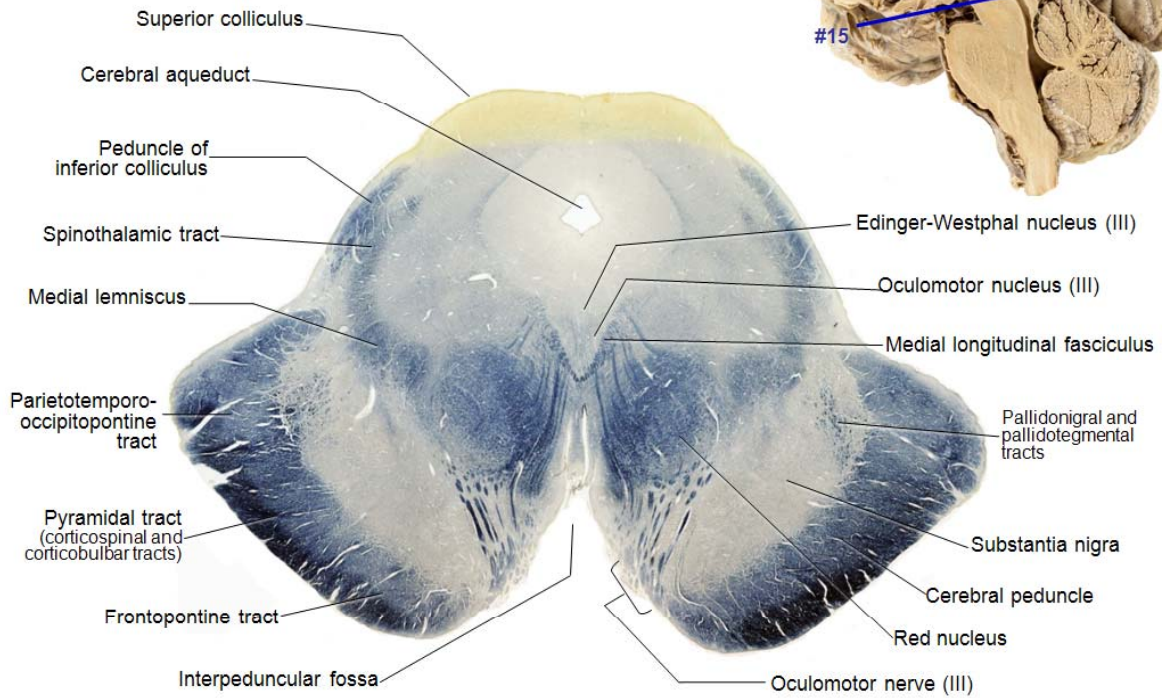
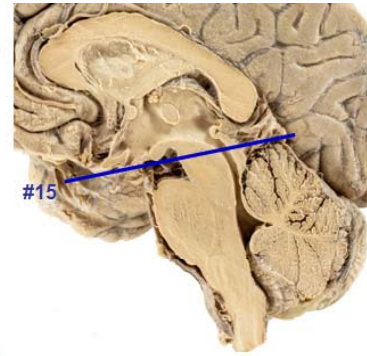
Level of Rostral Inferior Colliculus (Section #14)



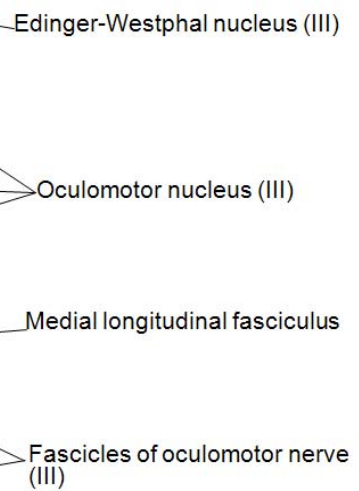
Section #14



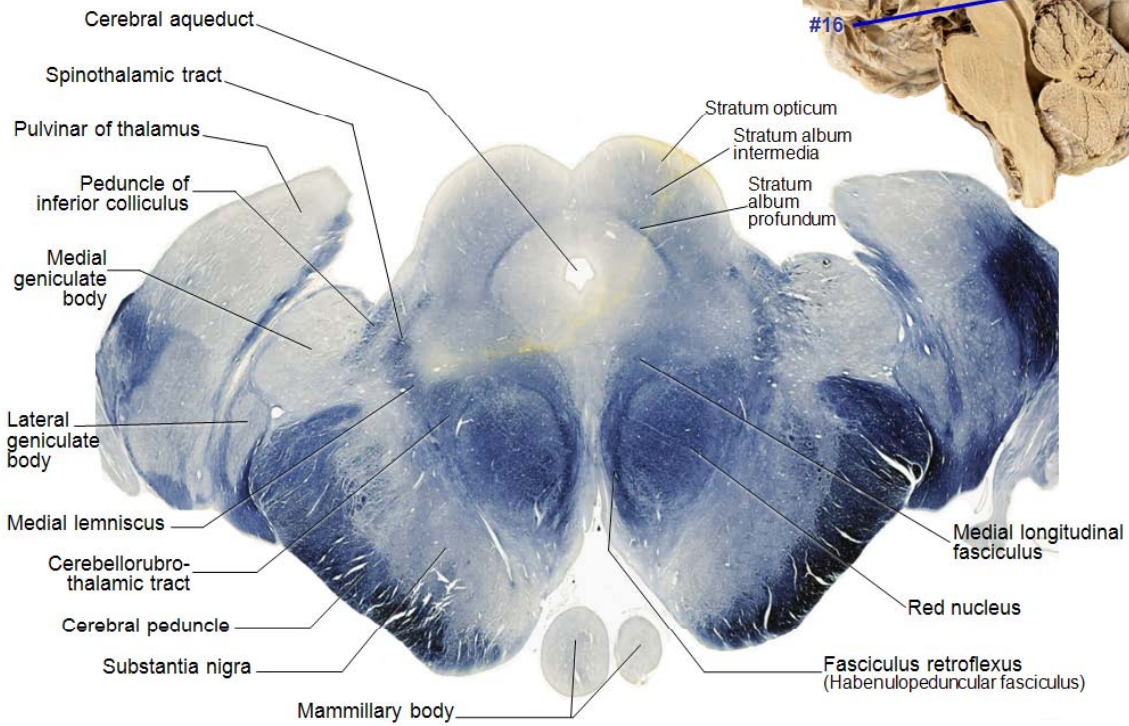
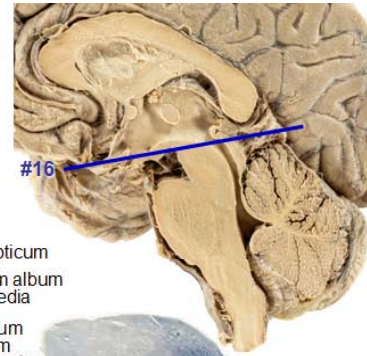
Level of Caudal Superior Colliculus (Section #15)



Section #15

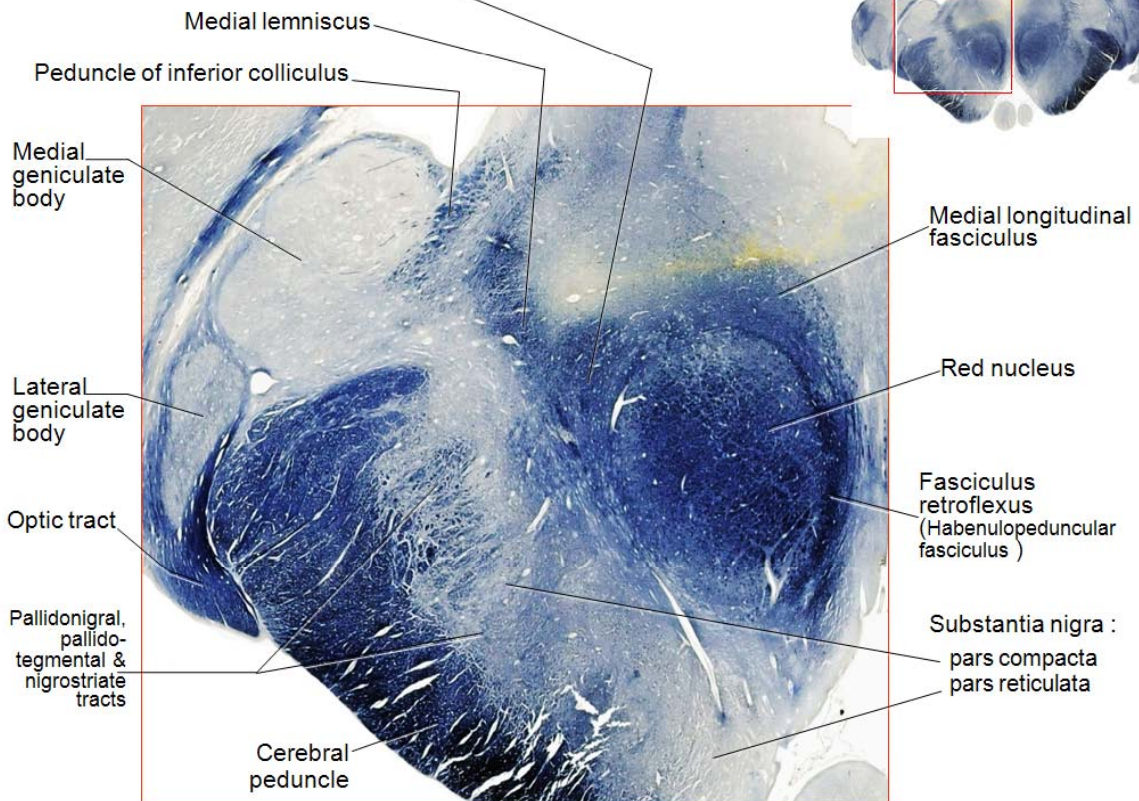
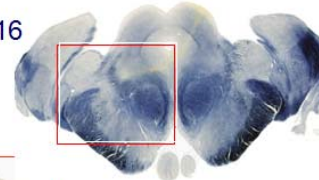


Level of Rostral Superior Colliculus (Section #16)

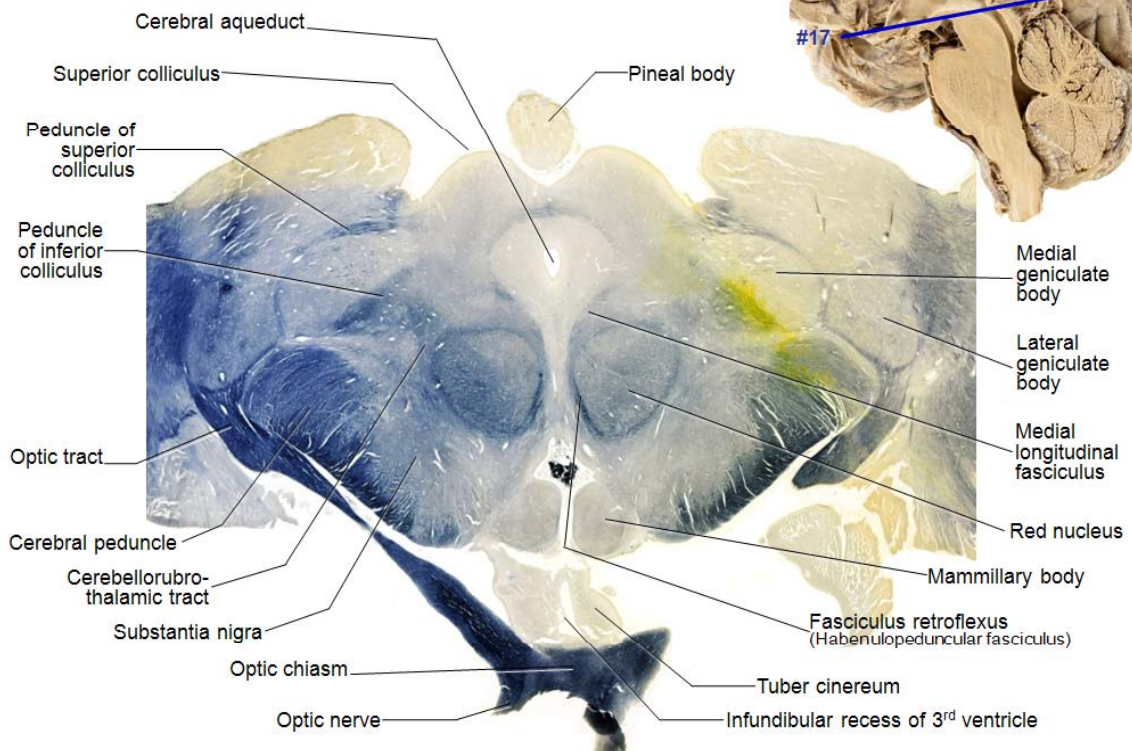


Cerebellorubrothalamic tract

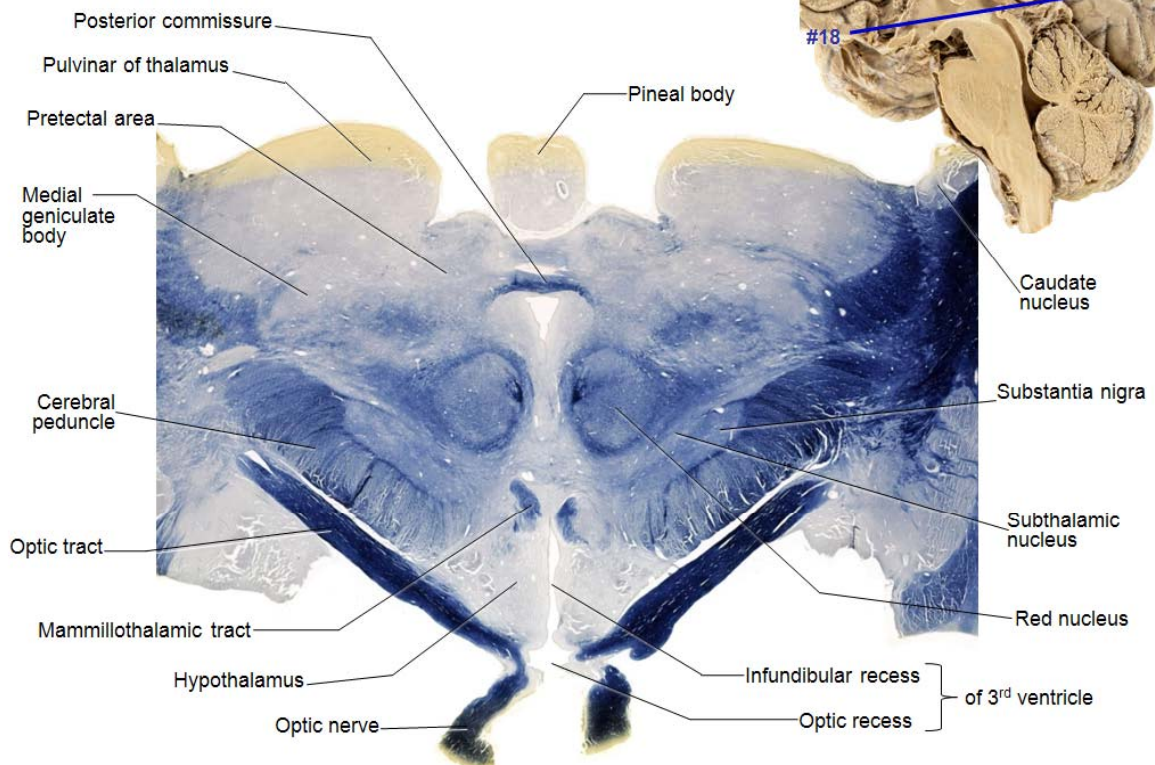
Section #16



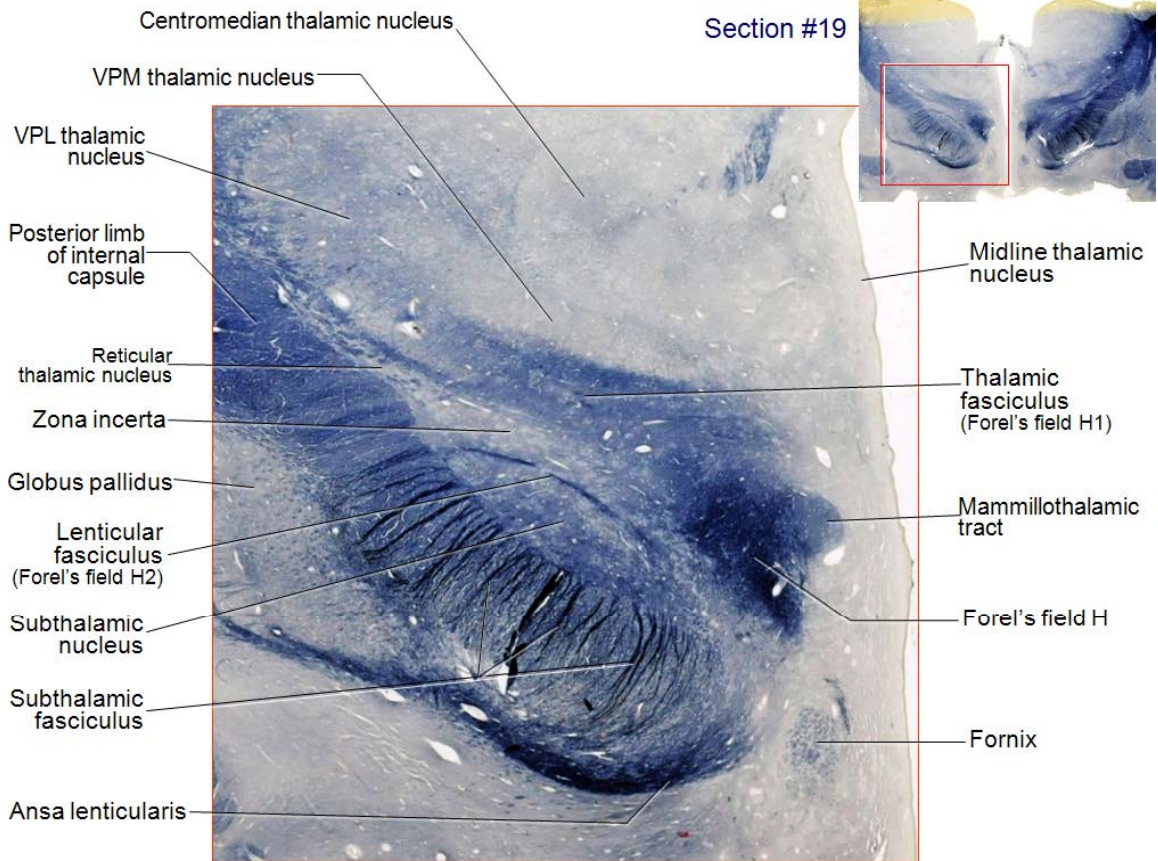
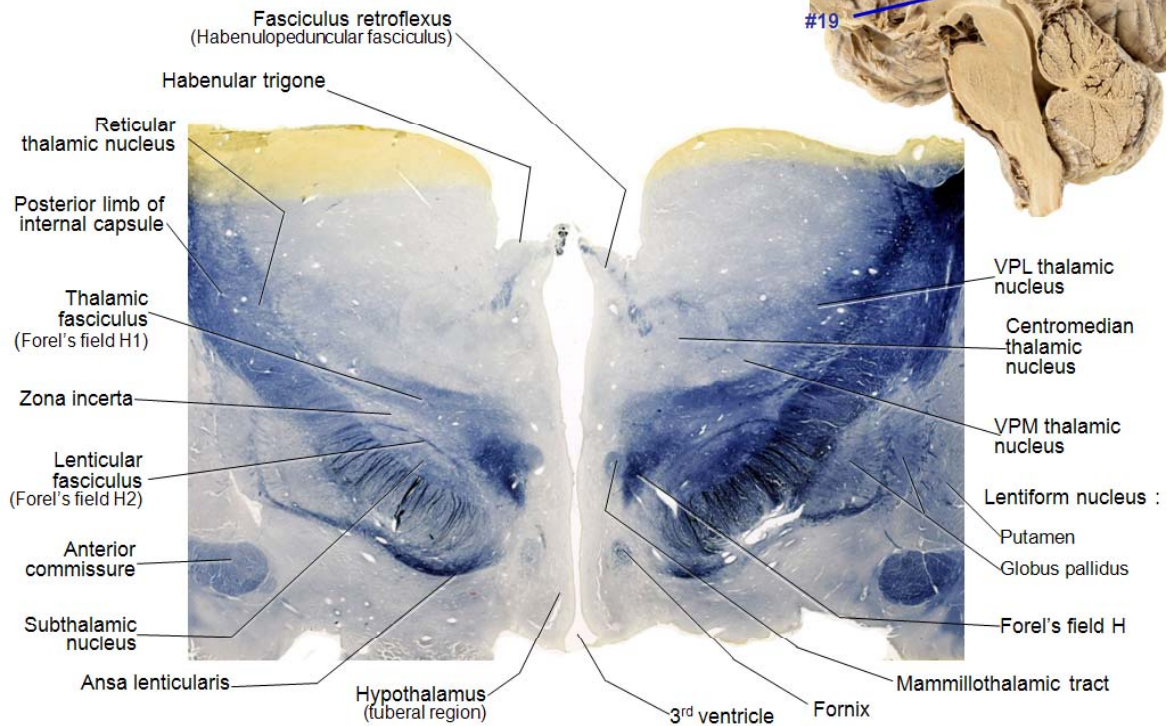
Pineal Body and Optic Chiasm (Section #17)



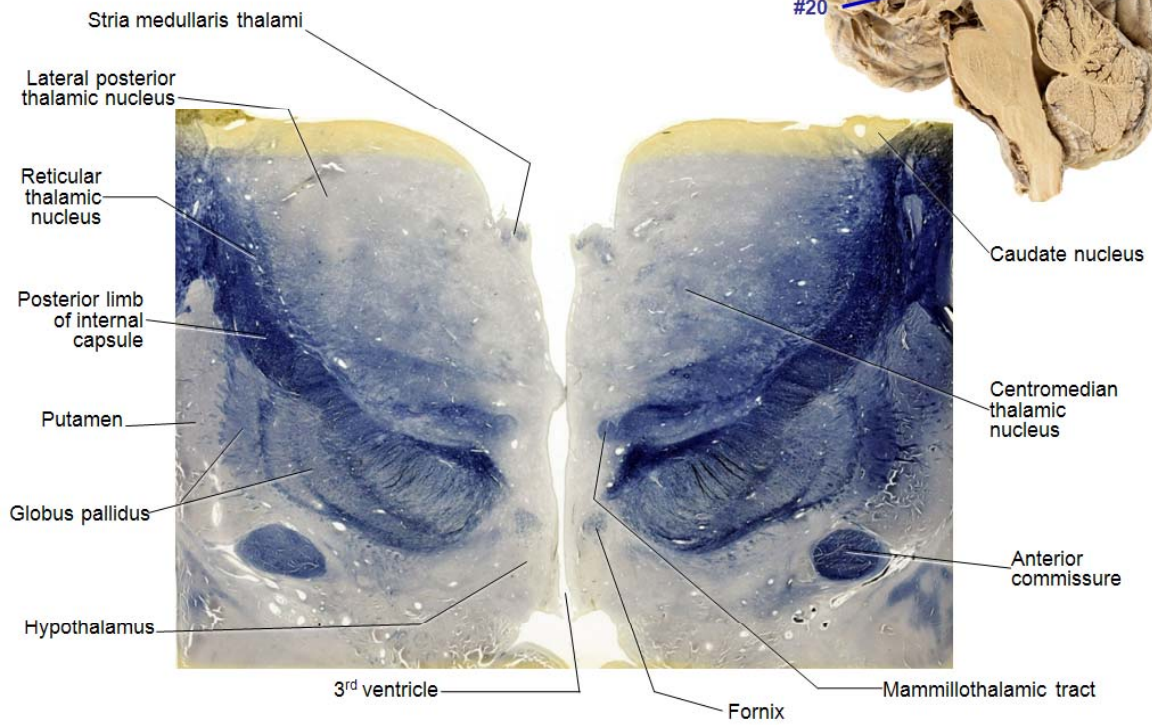
Pretectal Area and Optic Recess of Third Ventricle (Section #18)



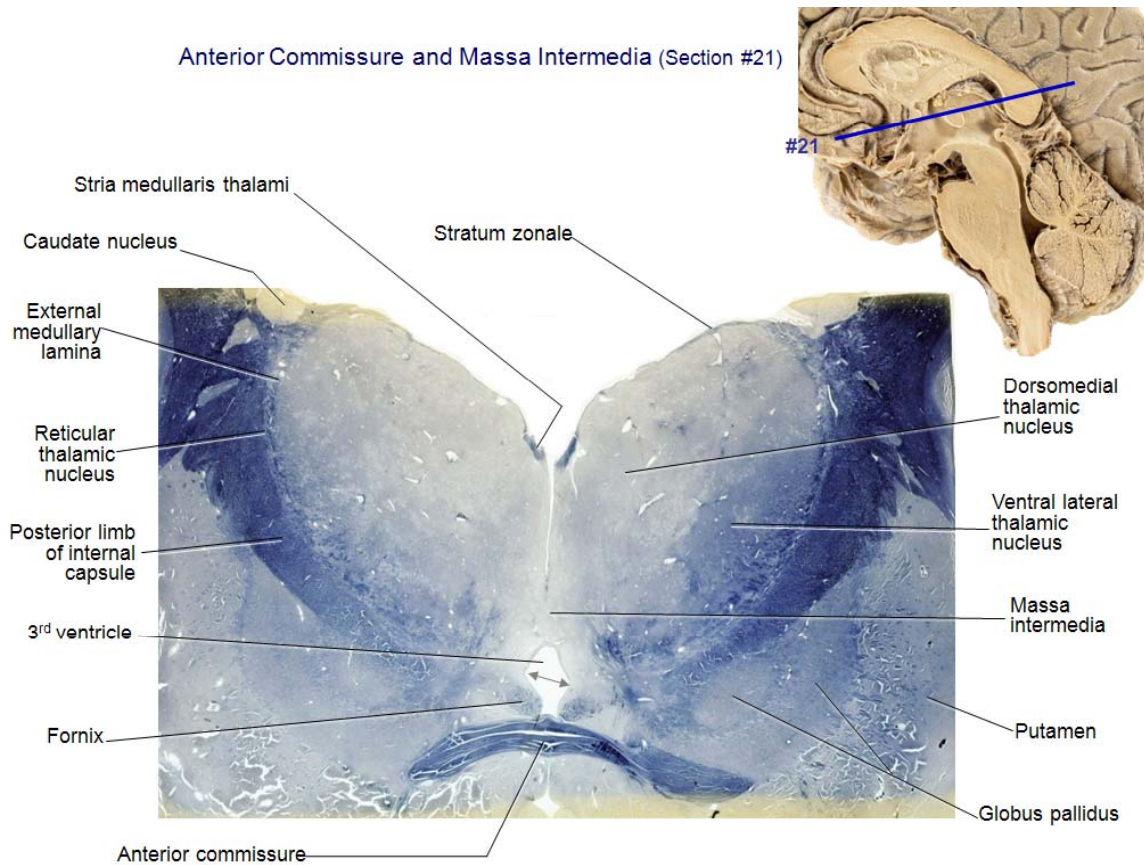
Habenular Trigone and Subthalamic Region (Section #19)



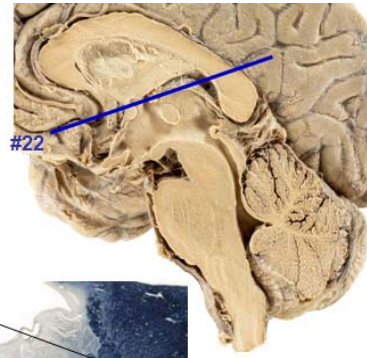
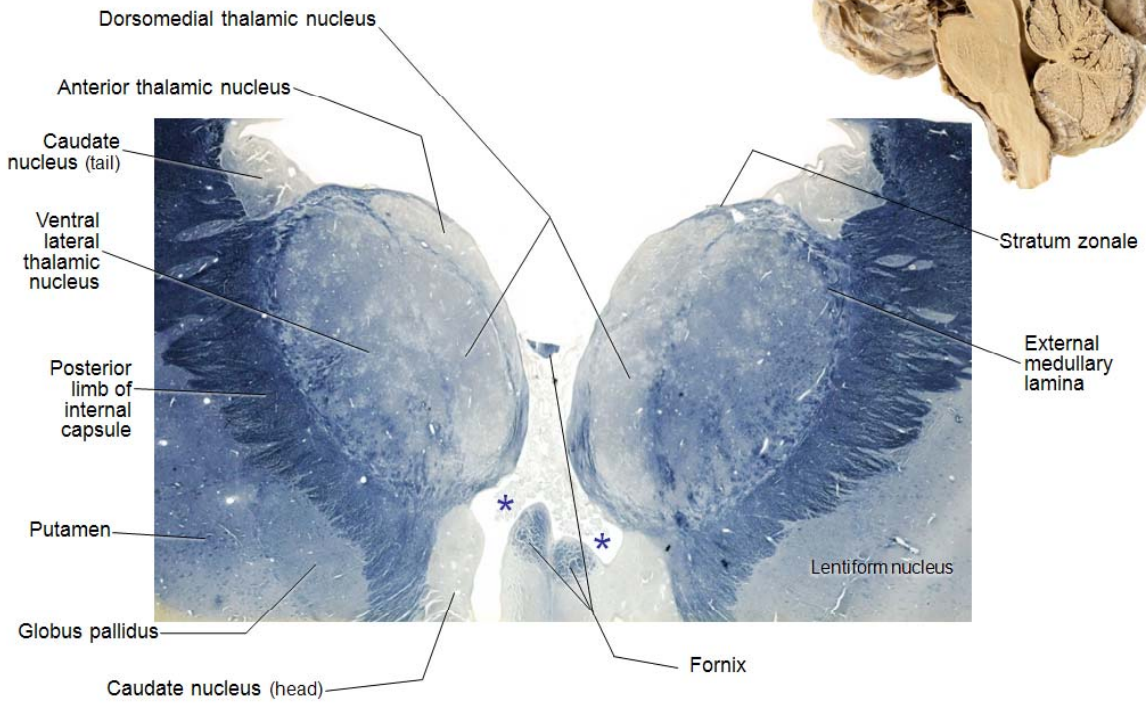
Section through Hypothalamic Sulcus (Section #20)



Anterior Commissure and Massa Intermedia (Section #21)



Interventricular Foramen of Monro (\*) (Section #22)



Rostral Thalamus and Column of Fornix (Section #23)

